

Linutop TV online service - User manual - (Draft)



Introduction

Linutop TV is a turn-key solution to realize online playlists and broadcast them over your display screens everywhere.



Stock your files - Create playlists - Broadcast on your screens

Summary

0. Introduction & Summary

I. Subscribing to Linutop TV service

II. Prerequisites

III. First steps with Linutop TV

IV. Linutop TV use

V. Recommendations for Linutop TV use with Linutop computers

I. Subscribing to Linutop TV service

Connect to www.linutop.tv

Click the **SUBSCRIBE** button and follow instruction.

SUBSCRIBE ▶

Subscribing gives you access to:

- ✓ Online storage*
- ✓ Online playlist edition
- ✓ Broadcast on several screens**
- ✓ Automatic configuration of your display systems

*Storage up to 2Gb

** Connect up to 3 screens, in option for more

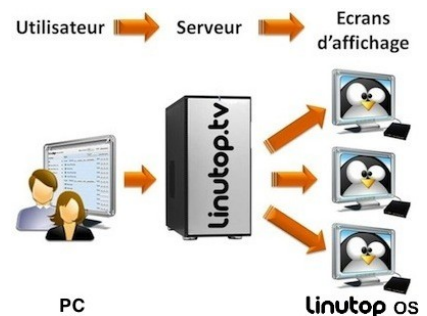
Linutop TV is available for subscribtion on www.linutop.com/shop

II. Prerequisites

Operating system : **Linutop OS 4.0.7** or latest

Linutop TV playlists are locally displayed thanks to **Linutop Kiosk**. This software is included within **Linutop OS** and **Linutop OS Demo** pre-installed software package.

You must boot your computer on **Linutops OS** (from a Hard drive, Flash card, USB key or CD) to diplay your **Linutop TV** playlist.



N.B.: Online playlists can be created and managed from any computer.

You can download our free trial Linutop OS Demo on:
Linutop.com

(section [Downloads](#))

III. First steps with Linutop TV

1. Connect to your Linutop TV account

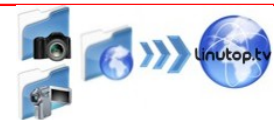
Connect to www.linutop.tv and click [Login](#).



Login with your **invoice number** / **e-mail address*** to access your **personal account**.

2. Realize your broadcast in 3 steps

2.1. Upload your files to your Linutop TV library



- ✓ **Click Add (Ajouter)** on top of the library.



- ✓ **Browse (Parcourir)** your local drives to add files as videos and images or manually type an URL to broadcast a specific webpage (format <http://www.linutop.com>).

OR



✓ Click **Send (Envoyer)** to launch the upload.
 Downloading may take a few minutes depending on the file's weight. The status bar of your browser provides you with processing information.

You can display files as :

- **Videos** (.avi, .mov, .mpg, .wma, .mp4, .flv, all formats compatible with VLC Media Player)
- **Photos** (.jpg, .jpeg, .gif, .png, .tiff)
- **URL** (with the format <http://www.linutop.tv>)

2.2. Create your own playlist



- ✓ **Create a playlist**
 Click **Create a playlist (Créer une playlist)** within the drop down list on top of the playlist field and **enter a playlist name** (alphanumeric characters only).



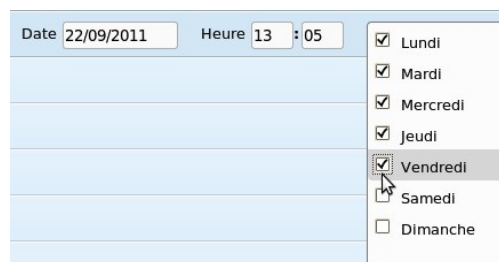
- ✓ **Drag & Drop** elements from the library to your playlist and **sort them** (drop them on the « Boucle » line).



- ✓ **Set up** order and duration of display for each element as much as for boucles**.

Example of set up :

- Launch a boucle at 1:05pm on the 22nd, September.
 (do not enter any repetition)
- Launch a boucle at 1:05pm every working day
 (do not enter any date)

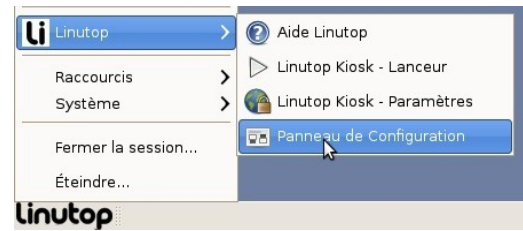


- ✓ To **Activate** the display click **Activate (Activer)**.

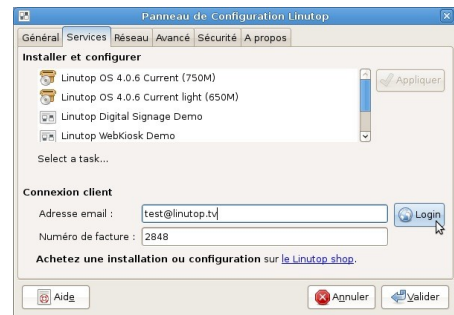


2.3. Connect your Linutop to Linutop TV to launch the display

- ✓ On your Linutop computer go to **Linutop Menu > Configuration panel**.

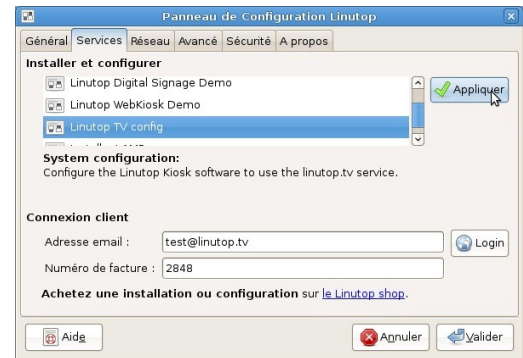


- ✓ Within the **Install** tab - **Customer login**, enter you **invoice number / e-mail***.
Validate clicking **Login**.



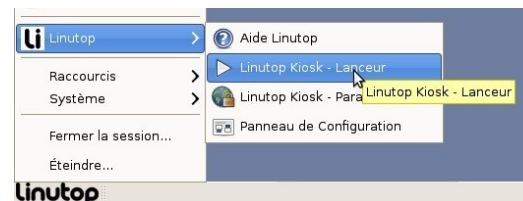
- A choice of automatic configurations appears within the drop-down list above.

- ✓ Select the configuration **Linutop TV** within the list.
Validate clicking **Apply**.
A message box show up to confirm the configuration.
Click OK to exit the configuration panel.



- The software **Linutop Kiosk** is now configured to display your « **Active** » online playlist.

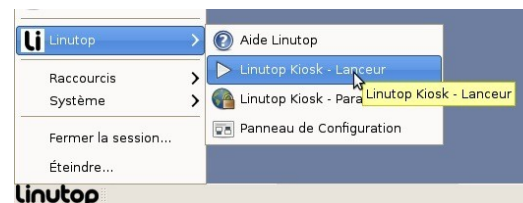
- ✓ **Launch Linutop Kiosk** to display it:
Linutop Menu > Linutop Kiosk Launcher



Set up the auto start of Linutop Kiosk on the computer's start (optionnal):

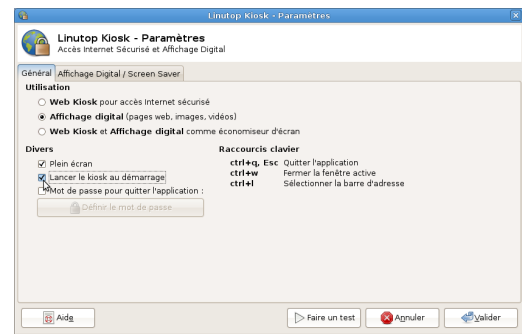
- ✓ Go to :

Linutop menu > Linutop Kiosk - Setup



- ✓ Tick the box **Run the kiosk at startup** within the **Misc** menu and click **OK** to validate.

→ Each time you will start your computer, it will automatically launch the display of your online playlist (or the last one in memory if the internet connexion is off).



End of the initial configuration tutorial !

* The **e-mail** address must be the one you used to make your purchase. You have received an e-mail containing all the connection information.

** A **boucle** is a playlist portion. It can be configured to start at a specific hour/date.

IV. Linutop TV use

Summary

Use the Library

Add an element
Modify an element
Delete an element

Edit a playlist

Add a playlist
Add elements to your playlist
Modify element's information within a playlist
Delete an element from a playlist

Edit a boucle

Add a boucle
Delete a boucle
Edit the display options of a boucle
Save a playlist
Delete a playlist

Playlist display

Activate the display of a playlist
What is the playlist « Server OFF » ?

Other use & FAQ

What means the indication « Total weight » (« Taille totale ») ?
How to escape a message box without saving ?

Use the Library

✓ Add an element

« → **PARCOURIR** → **OUVRIR** → **ENVOYER** »

Click **Add (Ajouter)** on the top right of the library to add an element to it. Browse your computer clicking **PARCOURIR**. Select a file (see what types of files are compatible on page 5) and click **Open**. Click **Envoyer** to launch the upload.

✓ Modify an element

«  + »

It is not currently possible to edit an element of the library. You have to delete it and add a new one clicking **AJOUTER**.

✓ Delete an element

«  »

To delete an element click the cross on its extreme right.

! Your file will be deleted straightly without confirmation !

Edit a playlist

✓ Add a playlist :

« → Entrer le « **NOM** » → **VALIDER** »

Click **CREER UNE PLAYLIST** within the drop-down list on top of the page. Enter a playlist **name. Validate.**

N.B. : The playlist's name:

- Can be up to 20 characters long
- Must contain only alphanumericals characters with no space.

Modify/Edit a playlist :

✓ Add elements to your playlist:

« **Glisser/Déposer** »

Drag & Drop elements from four library to your playlist (drop them on the « Boucle » line). You can sort them the same way.

✓ Modify element's information within a playlist

Modify an element's display duration clicking the field **Heure**

Use the format : hh / mm / ss (h :hour, m :minute, s :seconde.

✓ Delete an element from a playlist:

«  »

To delete a playlist click the cross on its extreme right.

Edit a boucle

✓ Add a boucle:

Click **AJOUTER UNE BOUCLE** to add a boucle.

✓ Delete a boucle



To delete a boucle click the cross on its extreme right.

N.B.: Boucles cannot be sorted. They must contain date and hours to get a logical display order.

✓ Edit the display options of a boucle

You can configure the display of a boucle in term of display **Date**, **Hour** to be launched, weekly **Repetition** or also automatic **Extinction**.

Date :

Fill the field with the date on which you want your boucle to be displayed.

Hour :

Fill this field with the hour on which you want your boucle to be displayed.
(format HH :MM)

Repetition:

Tick the days you wish your playlist to be displayed.

N.B.: By default your boucle will be displayed everyday even if no box is ticked.

Extinction :

Tick this box to make an extinction playlist. This playlist is used to switch-off (sleeping mode of your monito) your display screens connected to Linutop TV once your playlist reach this point. Setup the date, hour or repetition for the extinction boucle to be valid.

N.B.: Your Linutop can also command your display screen to switch-on in the case of an online modification or if a playlist is setup to begin at a specific hour/date. cas d'une programmation de playlist devant débuter à un horaire/date donné.

Eg.:

An extinction boucle which « Repetition » is ticked on Friday and Hour is setup at 7pm will switch-off your display screens at the end of the paylist once 7pm is passed.

✓ Save a playlist

Your playlist modifications are saved in real time so that you don't have to worry about saving.

Note about online modification visualisation :

When you proceed to an online modification your changes won't be visible on your display in real time.

In fact the playlist locally displayed on your screens is updated automatically every 30 minutes by default (this can be modified in *Linutop Kiosk - Setup*). Moreover this update is only done once the current playlist display ends.

The update is forced each time you launch *Linutop Kiosk* (via *Linutop Kiosk - Laucheur* or when you « Run a test » in *Linutop Kiosk - Setup*).

To quickly see your modifications :

- Validate your modifications clicking **ACTIVER** within the online interface (on the right of your playlist's name) **[online]**
- **Re-launch** the display on your computer **[locally]**

✓ **Delete a playlist**

You can create an unlimited number of playlists. There is no delete functionality yet.

Playlist display

✓ **Activate the display of a playlist :**



Once your playlist created and saved (automatically) you will have to activate its display clicking **ACTIVER** on the right of your playlist's name.

You can create multiple playlists but only broadcast one. The « active » playlist (means the one which is displayed on your screens) has a **green point** on the left of its name in the drop-down list.

See→ « **Note about online modification visualisation** »

✓ **What is the playlist « Server OFF » ?**

The playlist « Server OFF » contains an extinction boucle. Its activation (See above « **Activate the display of a playlist** ») trigger the switch-off of your display screens.

See→ « **Extinction** » dans « **Edit the display options of a boucle** ».

Other use & FAQ

✓ **What means the indication « Total weight » (« Taille totale »)?**

The « Total weight » indicated is the one of your library.

Taille totale : 6.95 MB

✓ **How to escape a message box without saving ?**

Just click outside the box in the grey translucent layer.

Recommandations for Linutop TV use with Linutop computers

Reminder about Linutop's characteristics :

	Processeur	RAM	Stockage (interne)
Linutop 2	AMD Geode LX800	512 MB by default (ext. up to 1GB)	1 GB Flash memory
Linutop 3 & Linutop 4	Intel ATOM N270 1.6 GHz	1GB by default (ext. up to 2GBDDR2)	2 GB Flash memory

1. About the Linutop's graphical power display

Linutop products range include 3 elements :

- **Linutop 2** has a light configuration. It can display high quality pictures but it is advised not to display videos over 300 lines.
- **Linutop 3 & 4** are three times more powerfull than Linutop 2. They can display high quality pictures and videos up to 520 lines.

2. Free space on Linutop'sflash memory

Free space after OS installation	Weight of Linutop OS	Free space
Linutop 2		250Mb / 400Mb
Linutop 3 & Linutop 4	750Mb / 580Mb [light]	1,25Gb / 1,4Gb